

The EEG Based Driver Safety System

E. Malar, M. Gauthaam, M. Kalaikamal, and S. Muthukrishnan

Abstract—In today's scenario, more and more people are required to travel back and forth to various places. With the increasing vehicular population and their movements on the roads, accidents are also steadily increasing. It has become a nightmare for the authorities to prevent/reduce such fatal accidents on the roads. But the authorities' efforts are in vain. It is shocking to know the study results that around 50% of the road accidents are owing to drunken driving all over the world [1], [2]. Any mechanism or device to reduce such deaths will be of great help. "THE SMART CAP" technology will help in preventing such deaths (caused by drunken driving and drowsiness while driving) and it is a means to save thousands of priceless human lives. [3], [4]

Index Terms—Electroencephalography, alpha wave, theta wave, power spectral density.

I. INTRODUCTION

"THE SMART CAP" technology captures brain waves and stops drivers from causing accidents due to drunken driving. It is based on the fact that, alpha activity of alcoholic person decreases and theta activity increases (alpha and theta activity are various frequency bands of brain activity). The smart cap consists of five embedded electrode in the form of forehead band, which is used to acquire the EEG signal. The acquired EEG signal is pre-processed and directed via Bluetooth to the intelligence unit which consists of microprocessor. This algorithm loaded processor is used to decompose the EEG signal into alpha, beta, gamma and delta waves. The decomposed EEG signal is analysed for alcoholic activity. The voltage produced by the algorithm is used to drive the relay system depending upon the presence or absence of abnormalities in the EEG. The key hole of car engine is replaced by the relay system. Thus the engine will start only if there is no significance of abnormalities in the decomposed EEG signal.

II. FLAWS IN CONVENTIONAL METHODS

Breath analyser is the most common method of testing for blood-alcohol content in use today. Personal breath analyzers estimate the concentration of alcohol in the body by measuring the amount of alcohol exhaled from the lungs.

The existing 'Automated Breath Analyzer' for detecting alcohol, consumed by the driver, is no longer useful because of its own limitations and demerits. This is based on the odour and the level of alcoholic (-OH) ions present in the breath. Hence, it can easily be cheated if the suspect takes

in spices or other smell attenuators. The other demerit is that sensors for detecting alcohol content in air within the vehicle ambience by using 'reducing (-OH reductases) or oxidizing enzymes (-OH oxidases)' is ineffective because of its less sensitivity and accuracy. Also the enzymes used in the sensor have to be replaced periodically. Another method is using pulse oxy-meters. Even though non invasive oxy-meters are available, a considerable amount of time is taken by the meters to detect -OH ions (This is the time taken by alcoholic ions to reach the cells from blood stream). Thus this is also not reliable and lacks practical application as an automated system for detecting drunk driving.

III. EEG

Electroencephalography is the recording of electrical signals from the brain. Each nerve cell (neuron) in the brain produces a tiny electrical charge; when a number of neurons become active, the sum of these tiny electrical charges can be detected on the surface of the scalp. Small electrodes placed on the scalp detect this electrical activity, which is magnified and recorded as brain waves (neural oscillations). These brain waves illustrate the activity as it is taking place in various areas inside the brain.

A. The Rhythmic Activity is Divided into Frequency Bands

Delta is the frequency range up to 4Hz. It tends to be the highest in amplitude and the slowest waves. It is seen normally in adults in slow wave sleep.

Theta is the frequency range from 4Hz to 7 Hz. Theta is seen normally in young children. It may be seen in drowsiness or arousal in older children and adults.

Alpha is the frequency range from 8Hz to 12 Hz. This is activity in the 8–12 Hz range seen in the posterior regions of the head on both sides, being higher in amplitude on the dominant side. It is brought out by closing the eyes and by relaxation.

Beta is the frequency range from 12Hz to about 30 Hz. It is seen usually on both sides in symmetrical distribution and is most evident frontally. Beta activity is closely linked to motor behavior and is generally attenuated during active movements.

IV. THE TECHNOLOGY

A. PSD Analysis

The PSD analysis is performed for finding out the power of the signal over a particular frequency band.

The literature survey reveals that the power of the EEG signal in frontal region decreases with the increase in the amount of alcohol intake, and the power of the EEG signal

Manuscript received February 6, 2012; revised April 9, 2012.

Authors are with the Dept. of biomedical engg, PSG college of technology, Coimbatore-04, Tamilnadu, India (e-mail: emalar_mathi@yahoo.co.in; gauthaam.shibu@gmail.com, kdkamal@yahoo.co.in; muthubme1@gmail.com).

in central, occipital region increases. This indicates that nerve stimulation of alcohol has a strong influence on central region, so people will become excited after drinking.[5]

1) *Theta(θ) waves:*

Theta (θ) waves which is shown in Fig.1, begin to appear and gradually enhances after consuming alcohol as the subjects are driven in to the state of sleepy and the central nervous system of the subjects is inhibited.[5]

2) *Alpha(α) waves:*

Alpha (α) waves which is shown in Fig.1, gradually decreases and the region of alpha (α) waves is expanded after consuming alcohol.[5]

3) *Beta(β) waves:*

The cerebral cortex remains in an excitable condition after consuming alcohol, which leads to beta (β) waves gradually enhanced and the area of beta (β) waves are expanded.[5]

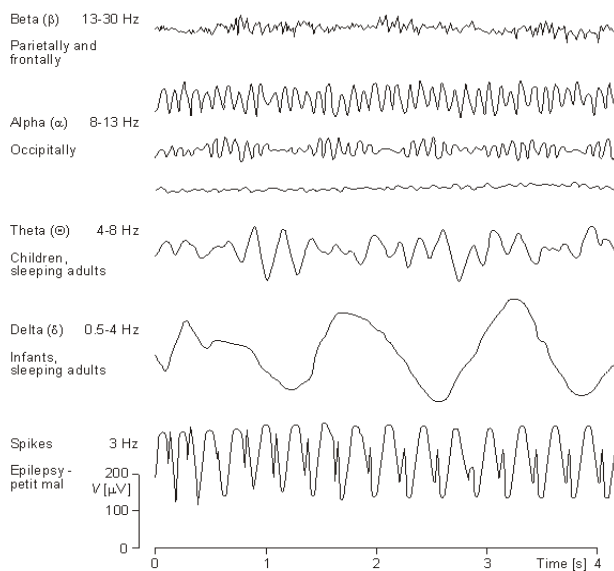


Fig. 1. Following are various frequency bands of EEG

V. THE SMART CAP

This proposed system has assembly of 3 units namely

- 1) Interface unit
- 2) Digital pre-processing unit
- 3) Intelligence unit

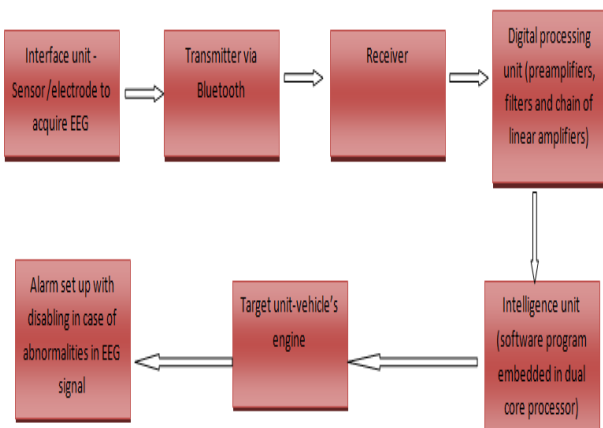


Fig 2. Block diagram

B. Interface Unit

This unit acquires EEG signals of the driver for the detection of alcohol. This unit has to ensure effective electrode system yet not irritate the users. “The recent research details the design, development and testing of a non-invasive mobile and wireless EEG system for continuously monitoring high-temporal resolution brain dynamics without requiring conductive gels applied to the scalp’.

A cap containing five embedded dry electrodes on the wearer’s forehead and one electrode behind the left ear is proposed to be used to acquire EEG signals. Then, the EEG signals are wirelessly transmitted to a data receiver through bluetooth, where they are processed in real-time.

C. Digital Pre-Processing Unit

This unit is a part of intelligent unit. The output from this digital pre processing unit is forced into the intelligent unit for further processing and decision making. It consists of preamplifiers and digital filters to remove the noise associated in the wave form such as power-line and base line interferences or noises. Preamplifiers are high input impedance amplifiers with high signal to noise ratio. This is in order to prevent mixing of noise while measuring EEG and to preserve the significant portions of the low frequency low amplitude biosignal. Buffers can also be integrated for temporary storage.

D. Intelligence Unit

Intelligence unit consists of a processor for processing the acquired EEG waves. This unit is placed in such a way that it enables or disables the engine depending upon absence or presence of EEG abnormalities.

VI. INTERFACING WITH ENGINE OF THE VEHICLE

Batteries of 12v or 24v or 42v are generally employed in the automobiles for starting and for the functioning of the electrical systems. As shown in Fig.3, whenever the driver intends to start his vehicle through his key, the ignition system circuit is completed. This allows the battery current to flow through the ignition coil which energizes the electronic spark distributor that is interconnected to the engine camshaft, which helps in providing the spark at appropriate time for efficient combustion of the charge. In the modern cars, an ECU determines the appropriate time by the inputs from numerous sensors.

A relay system replaces the key. Relay is driven by the voltage that is provided by the intelligent unit depending upon the presence or absence of abnormalities in the EEG.

Now if any abnormality is detected by the algorithm relay drivable voltage is not produced so battery of the vehicle and relay system stays open and engine doesn’t start. And vice versa happens if abnormality is not detected.

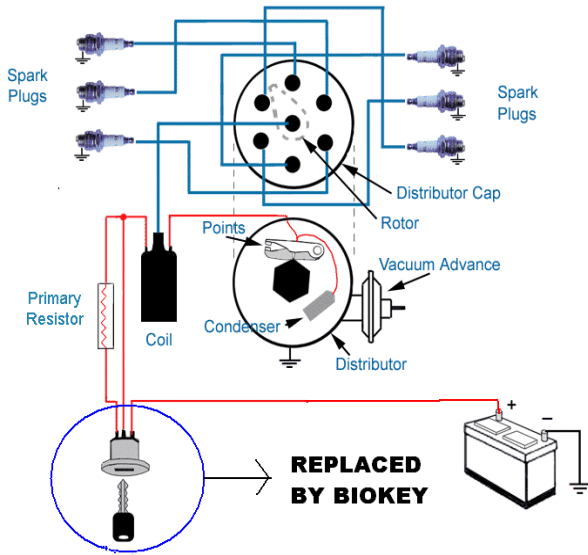


Fig. 3. Engine interfaced with biokey

VII. RESULTS

Based on the methodology discussed above, this section describes the results and their interpretation

As shown in Fig.4, EEG signals of 5 normal people and 5 alcoholic people were used and further analysis was carried out to find the correlation between EEG of normal person and alcoholic.

As shown in Fig.5-8, EEG signal was decomposed into 4 frequency bands (alpha, beta, delta and theta) and their power spectrum were analyzed and following results were obtained.

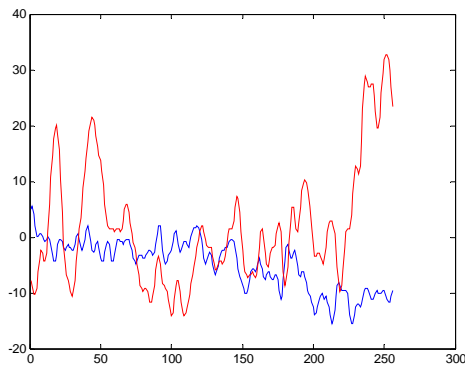


Fig. 4 EEG of normal person (red) vs. alcoholic person (blue)

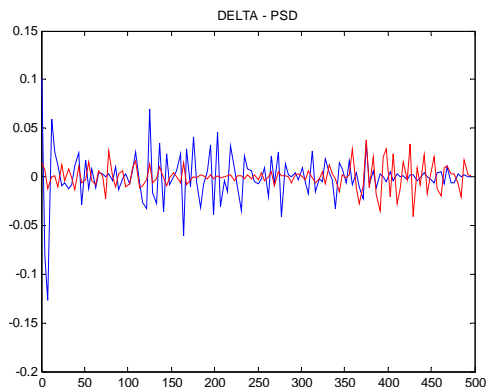


Fig. 5. Power spectrum density of delta wave of normal person (red) and alcoholic person (blue)

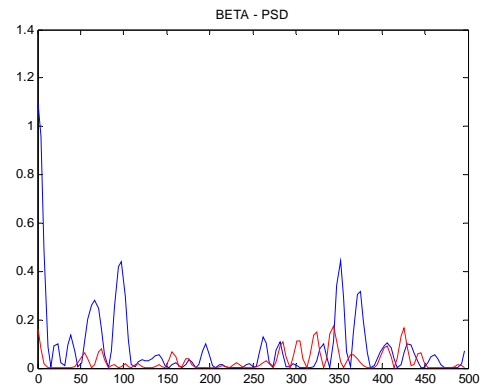


Fig. 6. Power spectrum density of beta wave of normal person (red) and alcoholic person (blue)

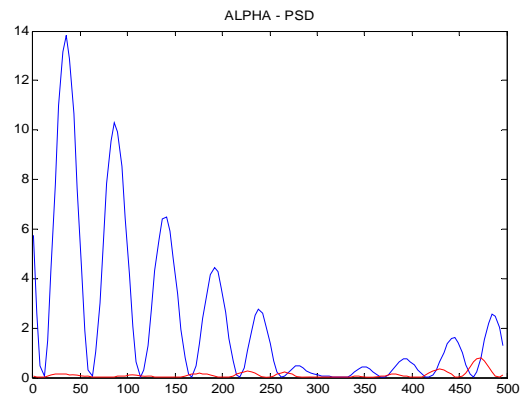


Fig. 7. Power spectrum density of alpha wave of normal person (red) and alcoholic person (blue)

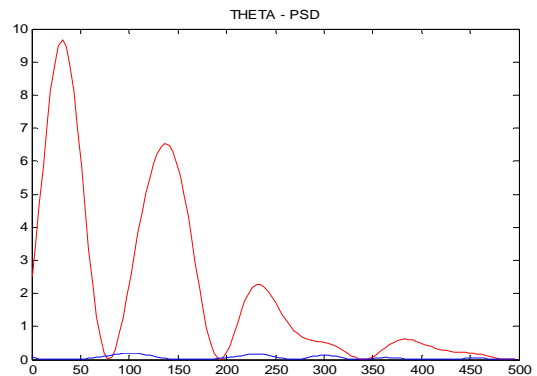


Fig. 8. Power spectrum density of theta wave of normal person (red) and alcoholic person (blue)

It is very much evident from the above plots that alpha activity is decreased in alcoholic person compared to normal person. Similarly theta activity is increased in alcoholic person compared to normal person. Going by these two facts normal person can be differentiated from alcoholics from their EEG.

VIII. DISCUSSION

The above results support the hypothesis that it is possible to prevent drivers from causing accidents due to drunken driving. Since this method deals with biological signals to identify the presence of alcohol, it is more efficient than the previous techniques. As when the product actually enters the

market as a standard equipment/accessory of the vehicle, will surely yield much greater benefits of saving thousands of human lives on roads every year.

REFERENCES

- [1] P. Philip, F. Vervialle, P. Le Breton, J. Taillard, JA. Horne. "Fatigue, alcohol, and serious road crashes in France", *Factorial study of national data. BMJ. 2001*; vol. 322, pp. 829–30.
- [2] J. Connor, R. Norton, and S. Ameratunga, et al. "Driver sleepiness and risk of serious injury to car occupants", *population based case-control study. BMJ. 2002*; vol. 324, pp. 1125.
- [3] JA. Horne and LA. Reyner, *Sleep related vehicle accidents. BMJ. 1995*; vol. 310, pp. 565–7.
- [4] S. Banks, P. Catcheside, L. Lack, RR. Grunstein, and RD. McEvoy, "Low levels of alcohol impair driving simulator performance and reduce perception of crash risk in partially sleep deprived subjects". *Sleep. 2004*; vol. 27, pp. 1063–7.
- [5] A. A. Yazdani, S. K. Setarehdan, "Classification of EEG signal correlated with alcohol", *Control and Intelligent Processing Centre of Excellence, School of ECE, Faculty of Engineering, University of Tehran, Iran.*



Ms. E. Malar was received the B.E. degree in Electrical and Electronics Engineering from Bharathiar University, India in 1998 and M.E. degree from Anna University, Chennai, India in 2008. She is working as a Assistant Professor in the Department. Of Biomedical Engineering, PSG College of Technology, Coimbatore. India. She is pursuing her Ph.D. under the guidance of Dr. A. Kandaswamy. Her



M. Gauthaam is a student of Department of Biomedical Engineering, PSG College of Technology, Coimbatore, India. He was awarded with summer research fellowship at National Physical Laboratory, New Delhi from Indian Academy of Science, Bangalore. His area of interest includes EEG Analysis, Signal processing and Artificial Intelligence. He is a member of Indian Society of Technical Education.



Kalaikamal was born in Vellore on 20th April 1991. Currently he is pursuing his Biomedical Engineering programme at PSG College of Technology, Coimbatore, Tamil Nadu. His area of interest developed in signal processing and Image processing.



Muthulrishnan was born in Madurai on 12th November 1990. He is currently pursuing his bachelor degree in Biomedical Engineering at PSG College of Technology, Coimbatore, Tamil Nadu. His area of interest developed in signal processing and Image processing.